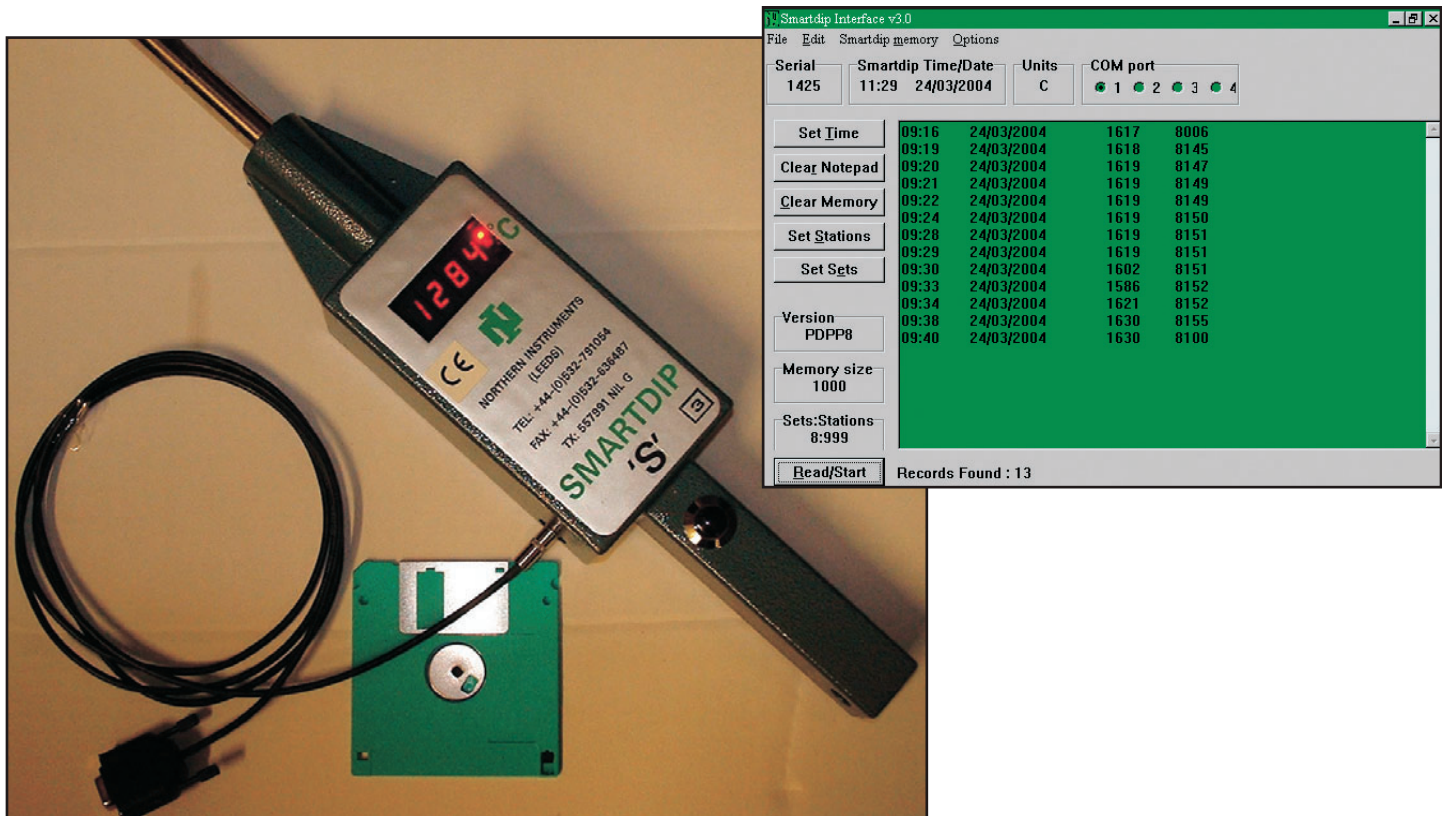


SMARTDIP 3D RANGE OF INTELLIGENT PORTABLE FOUNDRY PYROMETERS FOR ALL MOLTEN METAL TEMPERATURES



SMARTDIP 3D is a rugged battery powered portable pyrometer with a 4 digit green or red LED display. Digital techniques ensure maximum accuracy & reliability.

The standard 1.25 metre steel dip arm, holding the thermocouple or its extension lead is normally hard wired and mechanically clamped to Smartdip.

SMARTDIP 3D is ranged for type 'B', 'K', 'N', 'R' or 'S' thermocouples in degrees Celcius or Fahrenheit, for ITS'90, IPTS'68 or IPTS'48 International Calibration Standard.

SMD 3D 'K' can be supplied with a hard wired or plug-in Accutip II or Marshall swaged dip arm: alternatively, KWIKTIP K-90 dip arm.

SMD 3D 'N' is supplied with an arm fitted with an Accutip II swaged dip arm.

SMD 3D 'B', 'R' & 'S' have dip arms with a connector to accept plug-in expendable thermocouples.

A low operating temperature version, Smartdip3D-SS is available: To our Siberian Specification SS20, it functions accurately down to -22°C (-8°F). The built-in Battery Watchdog Module protects the battery pack against being recharged below 0°C & overcharging.

The Sequence Indicating Lights, at the side of the display plus various display signals keep the operator fully informed of progress through the measurement process.

A red LED advises when to withdraw the probe from the melt.

SMARTDIP 3D, also stores the reading + time & date of reading, for future downloading to computer, via a stereo socket, in the side of the instrument.

The battery pack is recharged from the mains, with a plug-in, constant current charger: Specify 100/110 or 220/230Vac, 50/60Hz.



NORTHERN INSTRUMENTS (LEEDS)

72 ARMLEY LODGE ROAD, LEEDS LS12 2AT
UNITED KINGDOM

Internet: <http://www.northern-instruments.com>



Telephone: (+44) (0) 113 279 1054
Facsimile: (+44) (0) 113 263 6487

Email: info@northern-instruments.com

SPECIFICATION

THERMOCOUPLE RANGES:-

SMD 'K'	-270 to 1372 deg. C for NiCr/NiAl	Type 'K48' or 'K90'
or	-454 to 2500 deg. F for NiCr/NiAl	Type 'K48' or 'K90'
SMD 'N'	0 to 1300 deg. C for NiCrSi/NiSi	Type 'N90'
or	0 to 2400 deg. F for NiCrSi/NiSi	Type 'N90'
SMD 'R'	0 to 1768 deg. C for Pt13%Rh/Pt	Type 'R48' or 'R68'
or	0 to 3214 deg. F for Pt13%Rh/Pt	Type 'R48' or 'R68'
SMD 'S'	0 to 1768 deg. C for Pt10%Rh/Pt	Type 'S48' or 'S68'
or	0 to 3214 deg. F for Pt10%Rh/Pt	Type 'S48' or 'S68'
SMD 'B'	300 to 1820 deg. C for Pt30%Rh/Pt6%Rh	Type 'B90'
or	570 to 3310 deg. F for Pt30%Rh/Pt6%Rh	Type 'B90'

INTERNATIONAL CALIBRATION STANDARDS: ITS'90, IPTS'68 & IPTS'48.

AUTO. COLD JUNCTION COMPENSATION RANGE: 0 to +55°C (32 to 131°F) or Siberian Specification, SS20: -22 to +55°C (-8 to 131°F).

ACCURACY: +/- 0.1% of reading +1°C or F.

RESOLUTION: 0.1° up to 200° then 1°C or F above.

POWER SUPPLY: 6 volt, Nickel Metal Hydride rechargeable battery pack or 4 x MN1500 Alkaline 1.5V cells, in battery holder.

STANDARD FEATURES

DISPLAY: 10mm Bright Green or Red, LED Sequence Indicating LEDs (Traffic Lights), Green, Amber, Red.

Built-in real time clock/calendar.

STORAGE CAPACITY: 999 readings with overflow & indication when full.

FURNACE MELT or CAST STATION Nos: Up to 999, set by operator.

SET or PLANT Nos: Up to 8, or A to H, set from PC.

Input/Output Windows program enables Smartdip to be set-up from a PC + collection of data by PC, for storage & further processing.

Compatible with Windows 95, 98, 2000, NT & XP.

1.5 Metre Input/Output lead with 9-way DIN plug, to PC.

LOW BATTERY VOLTAGE INDICATION: ' . . . ' flashing.

BROKEN THERMOCOUPLE: Display shows '- -' flashing.

If thermocouple breaks during a measurement, latest measured value is displayed, flashing.

Off-scale Indication e.g. Type 'B' at ambient, display shows '- -'.

REVERSED INPUT: Counts down to -60 then changes to '- -' flashing.

Standard Dip Arm, 16mm x 1.25 metre with 30 degree bend:

Longer, shorter or larger diameters, can be supplied.

BATTERY CHARGER: External, plug-in 70mA stabilised.

CURRENT: specify 100/110 or 220/230Vac., 50/60Hz.

Automatic Plateau Detection Reading held for 15 seconds before automatic switch off, unless Reset button is pressed.

Weight with standard 1.25m dip arm: 2.5Kg.

DISTRIBUTED BY: